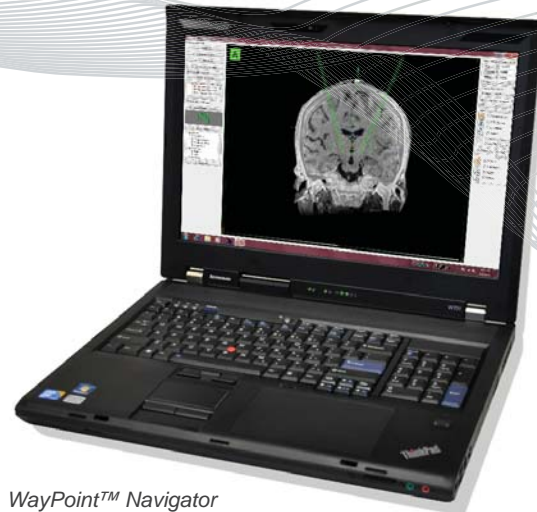


# WayPoint™ Navigator

featuring the **CranialVault™ Atlas**

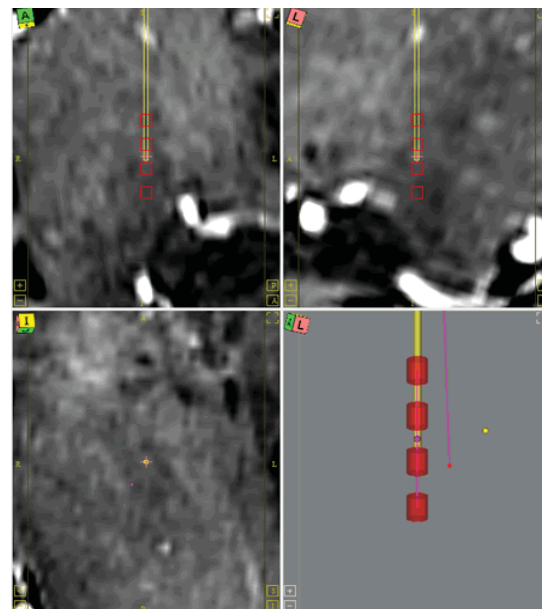
microTargeting™



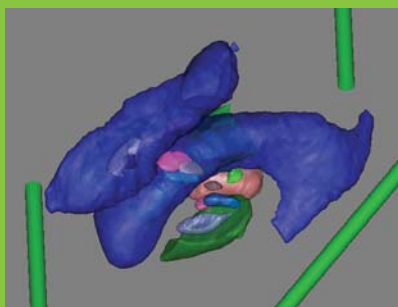
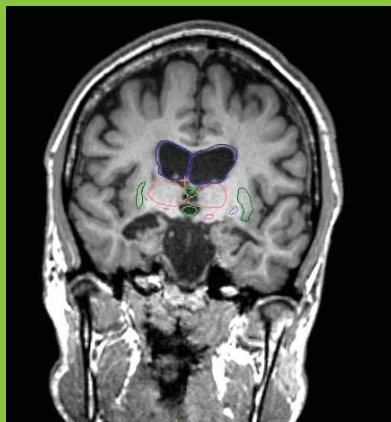
WayPoint™ Navigator planning station for powerful, portable planning and visualization.

## Features

- **Intuitively designed software** organizes planning into sequential steps and features three 2D views, scan merge thresholding, contrast controls, split screen merge verification, 3D modeling of anatomical structures, and multiple built-in lead models for ideal targeting.
- **Visualize your surgical plan** – patient anatomy, target, trajectory and offset trajectories, as well as lead placement - on the high resolution WPN workstation. Use optional **CranialVault™ Atlas** with patient-customized anatomical structures to help confirm your target selection.
- **Optimize OR efficiency** by removing all targeting from the OR: microTargeting™ Platform planning can be undertaken up to 3 weeks before the surgery, and for traditional headframes utilize the patient MRI for planning and then merge with the CT scan just before surgery.
- **Rely on FHC's 24/7 remote technical and planning support** with online screen sharing to help support your planning needs.



WayPoint™ Navigator features 11 lead models. Contacts of the DBS lead are displayed for placement confirmation.



## CranialVault™ Atlas

This optional addition to the WayPoint™ Navigator software provides anatomical structures that are merged with the patient's MR scans. Visualization of structures in a patient-specific way allows surgeons more reference points when making targeting decisions. Structures are individually color-coded and may be turned on and off independently. The Atlas is available in both the planning and intra-operative modules.

## WayPoint™ Navigator Ordering Information

- 66-WP-NV..... WayPoint™ Navigator System
- 66-WP-AA ..... CranialVault™ Atlas
- SERV-WAR-WPN .....1 year WayPoint™ Navigator Service Contract
- SERV-WAR-WPA .....1 year CranialVault™ Atlas Service Contract

L022-WP Nav



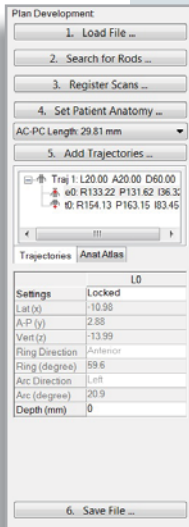
FHC, Inc.  
1201 Main Street  
Bowdoin, ME 04287 USA  
Fax: +1-207-666-8292  
www.fh-co.com

24 hour technical service:  
1-800-326-2905 (US & Canada)  
+1-207-666-8190



FHC Europe  
(TERMOBIT PROD srl)  
129 Barbu Vacarescu Str, Sector 2  
Bucharest 020272  
Romania

"Innovation through collaboration"

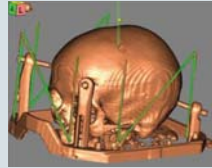


### 1. Load scans

A patient MRI scan allows planning to begin days before surgery.

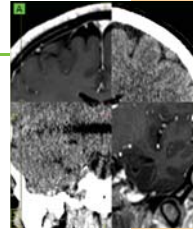
### 2. Search for rods

Rods are located automatically, but may be identified by hand if necessary.



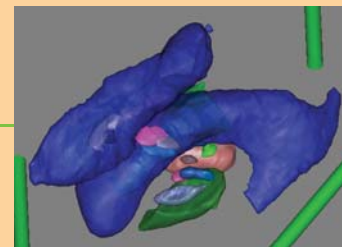
### 3. Register scans

Up to 8 scans may be registered for each patient. Multiple blend and window tools allow for confidence in registration quality.



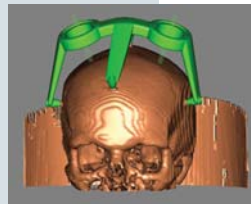
### 4. Register CranialVault™ Atlas

The atlas may be registered as soon as a full head MRI has been loaded. Anatomical structures are patient-customized for optimal reference when planning targeting and trajectories.



### 5. Add trajectories

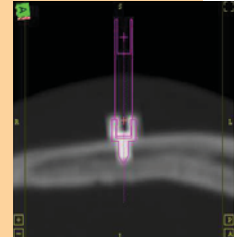
Surgeons may create custom coordinate settings and save them for one-click target localization. Surgeon's-eye view allows confirmation of trajectory placement.



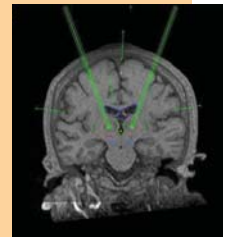
Anchor implants, scanning and planning can be performed up to 3 weeks before surgery.

### Search for anchors

Software automatically detects anchors (fiducials) and then leads user to verify selection of each one. Additional anchors may be added by hand if necessary.



Once a trajectory has been created, it may be mirrored over the midline, making creation of a bilateral Platform simple and straightforward. Target and entry point are adjustable as necessary for the patient's anatomy.



### 6. Platform design

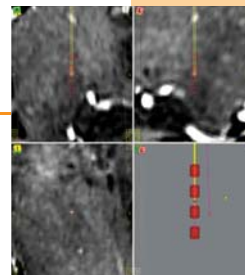
Creation of a Platform will automatically assign previously identified anchors and previously created trajectories. Once a height has been chosen, a 3D Platform model is displayed, allowing confirmation of Platform design. Adjustments may be made prior to creation of the production file.

### 7. Intra-operative Track Display

New offset trajectories are created using a .5mm gridded circle, which mimics the available burr hole area. One click allows a new track to be created, and the surgeon's-eye view gives confirmation that the track has been placed in the optimal location.

### 8. Intra-operative Lead Display

Leads may be visualized in both 2D and 3D views. Leads may be placed along any previously created track, and contact placement is adjustable based on anatomical atlas reference points or at the surgeon's discretion.



Entry and target offset adapters may be chosen to create new offset trajectories. Once adapters have been chosen, the new track may be verified by using the surgeon's eye view. If additional tracks are deemed necessary, alternate offset may be chosen, and new tracks will be displayed.

